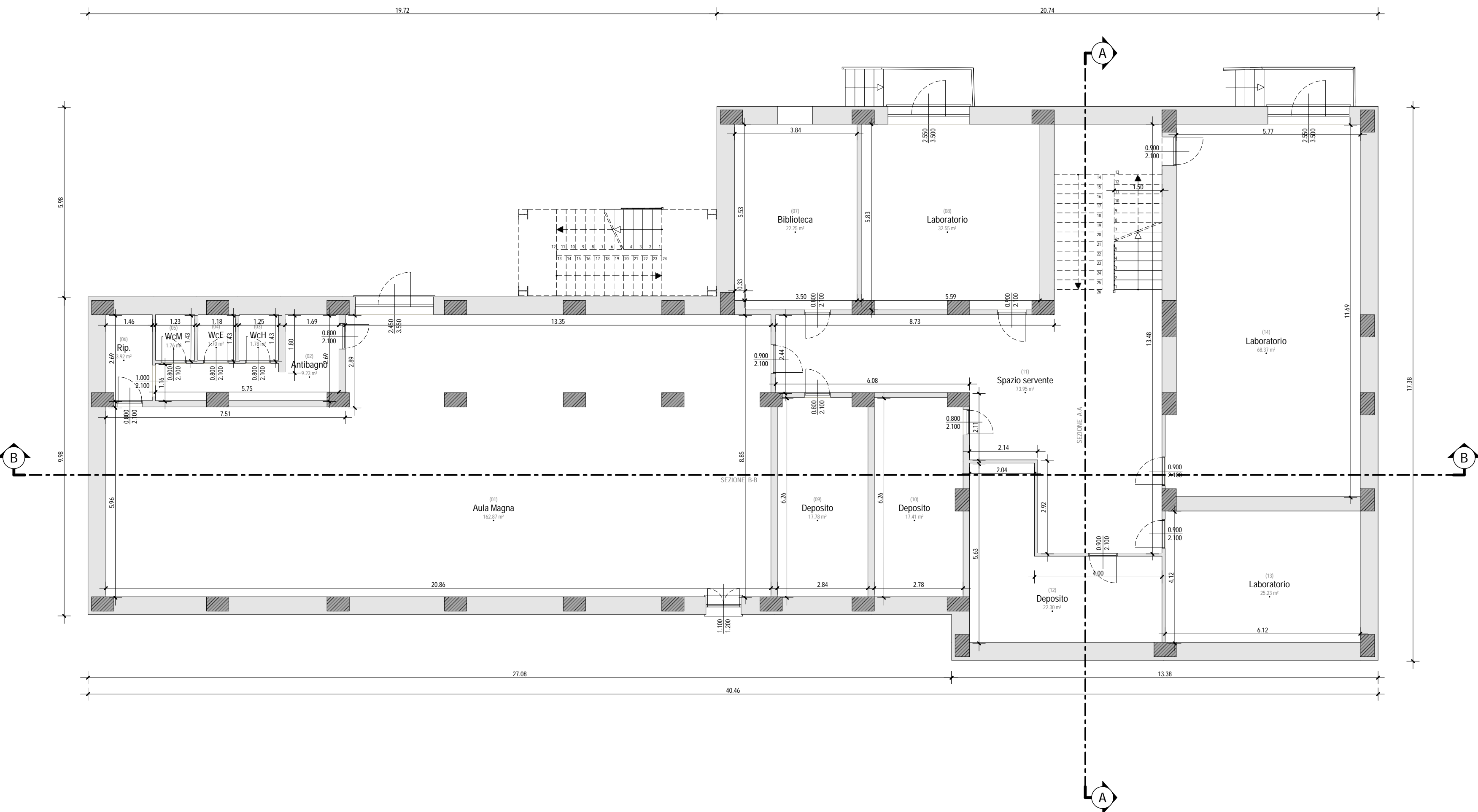
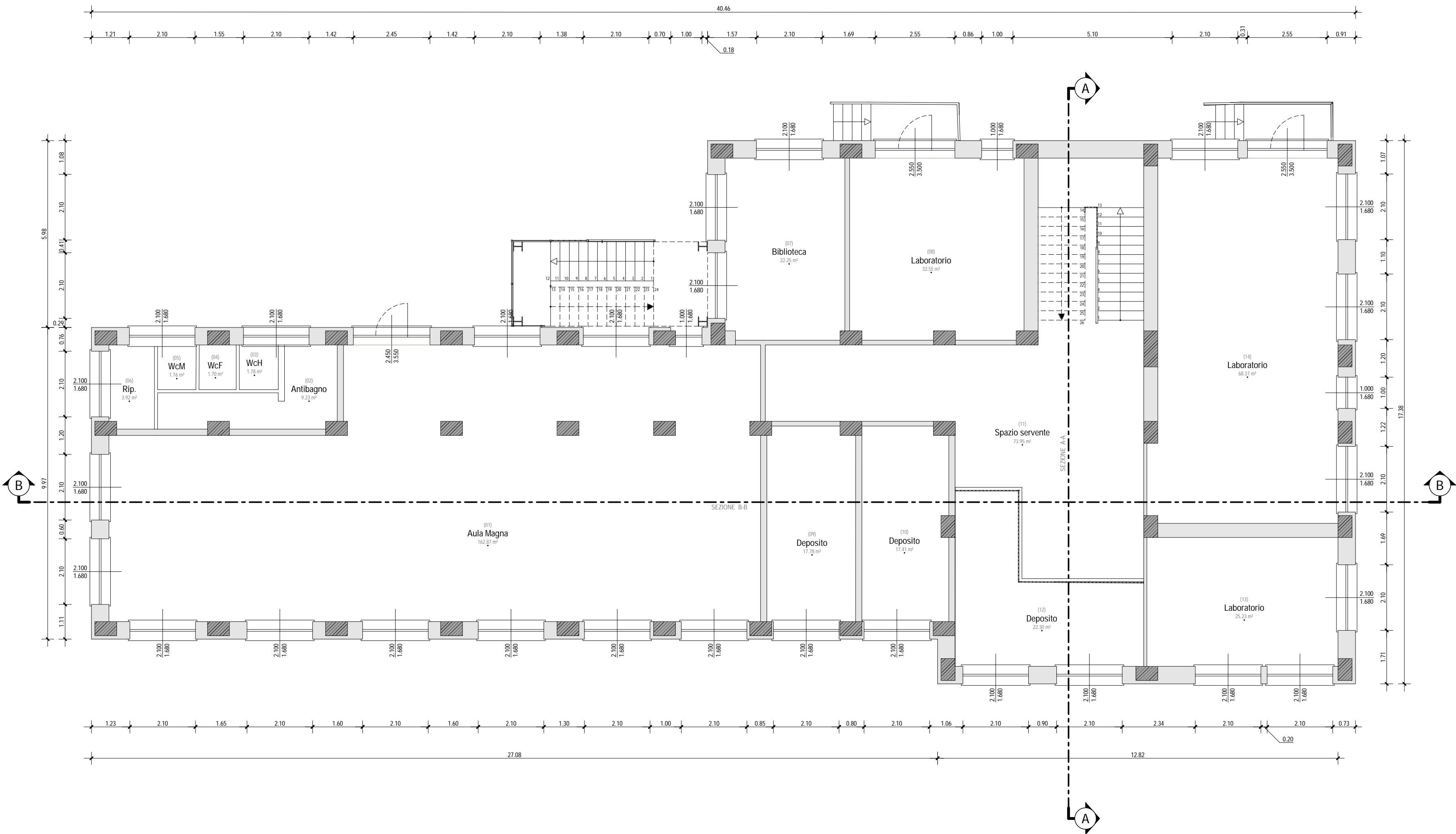


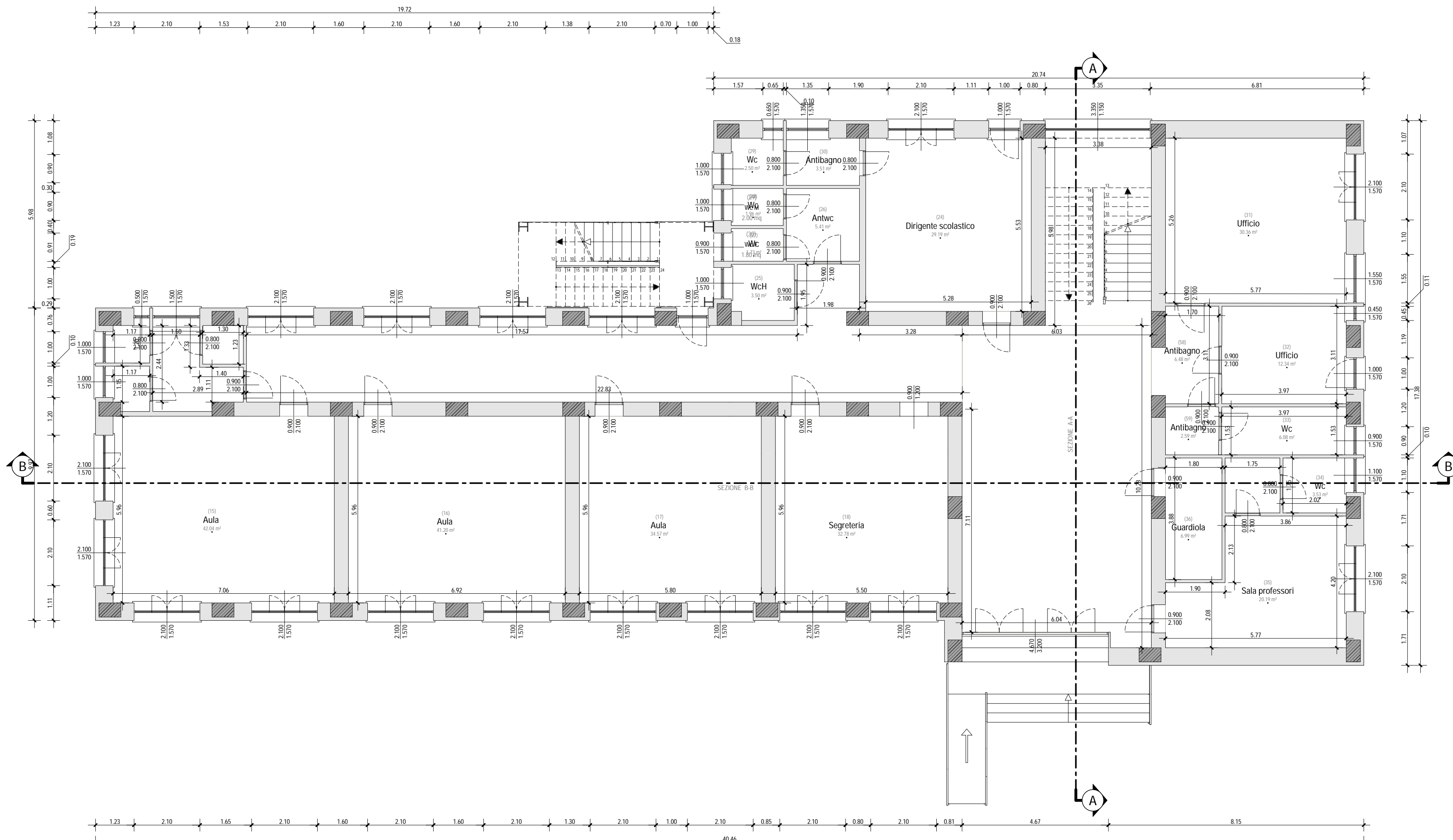
PIANO TERRA
Quota 1.20 ml
Scala 1:100



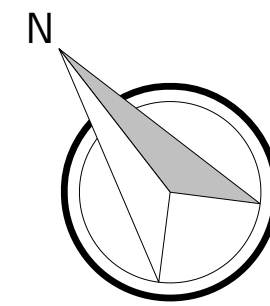
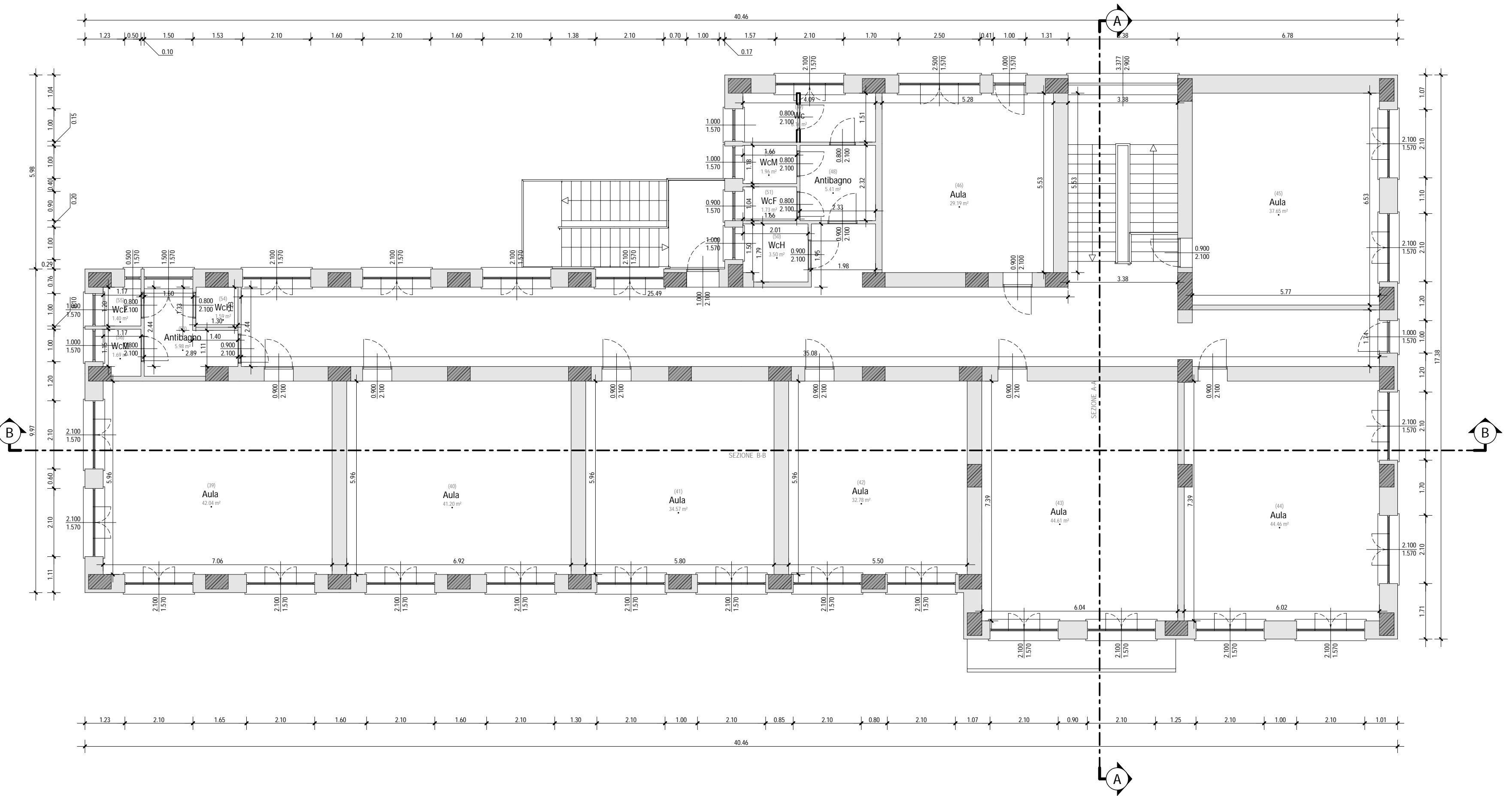
PIANO TERRA
Quota 2.70 ml
Scala 1:100



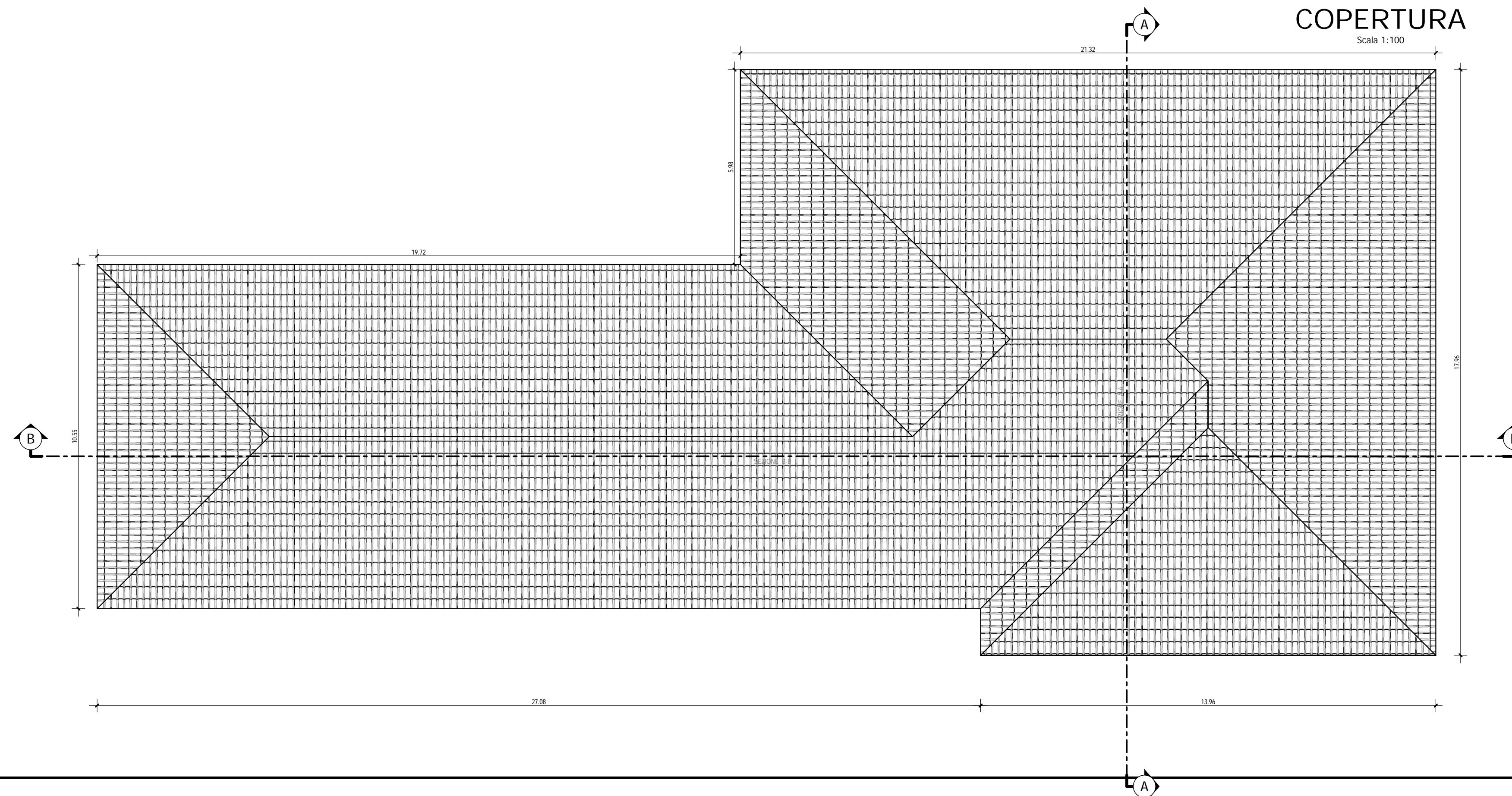
PIANO PRIMO
Scala 1:100



PIANO SECONDO
Scala 1:100



COPERTURA
Scala 1:100



COMUNE DI SERSALE
- PROVINCIA DI CATANZARO -
REGIONE CALABRIA



LAVORI DI:
ADEGUAMENTO E MESSA IN SICUREZZA
SCUOLA MEDIA STATALE "G. BIANCO"

PROGETTO ESECUTIVO

Comune di Sersale:
Ing. Salvatore LOGOZZO
(Responsabile Unico del Procedimento)

Tecnico:
Ing. Antonio GIGLIOTTI
(Progettista e Direttore lavori)

TAV.	PE.AR.05	OGGETTO:	TIPO FILE
SCALA	1:100	Scuola - Stato Attuale:	DWG DOC EXCEL ALTRO
1	emissione		
2			
3			